

## Windows 7 Wireless Connection Settings (No Onboarding)

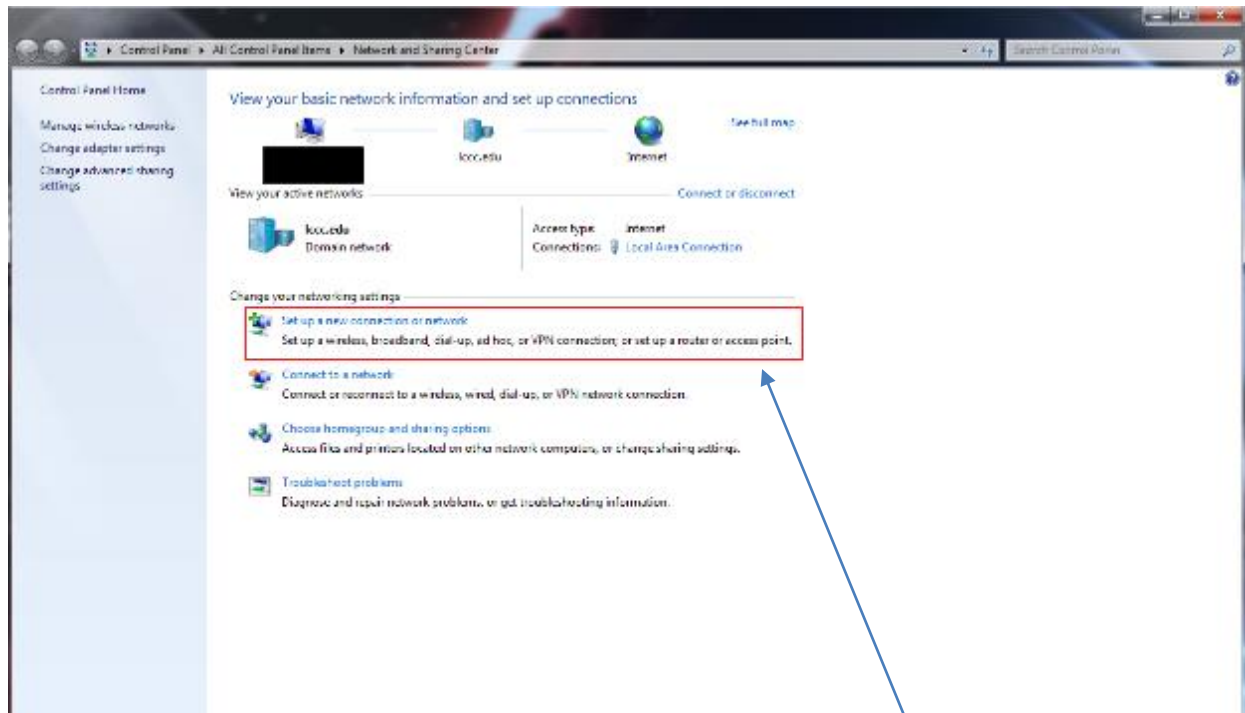
These instructions are to be used for faculty & staff connecting to the college Wi-Fi. Only use these instructions for students if the onboarding process does not work.



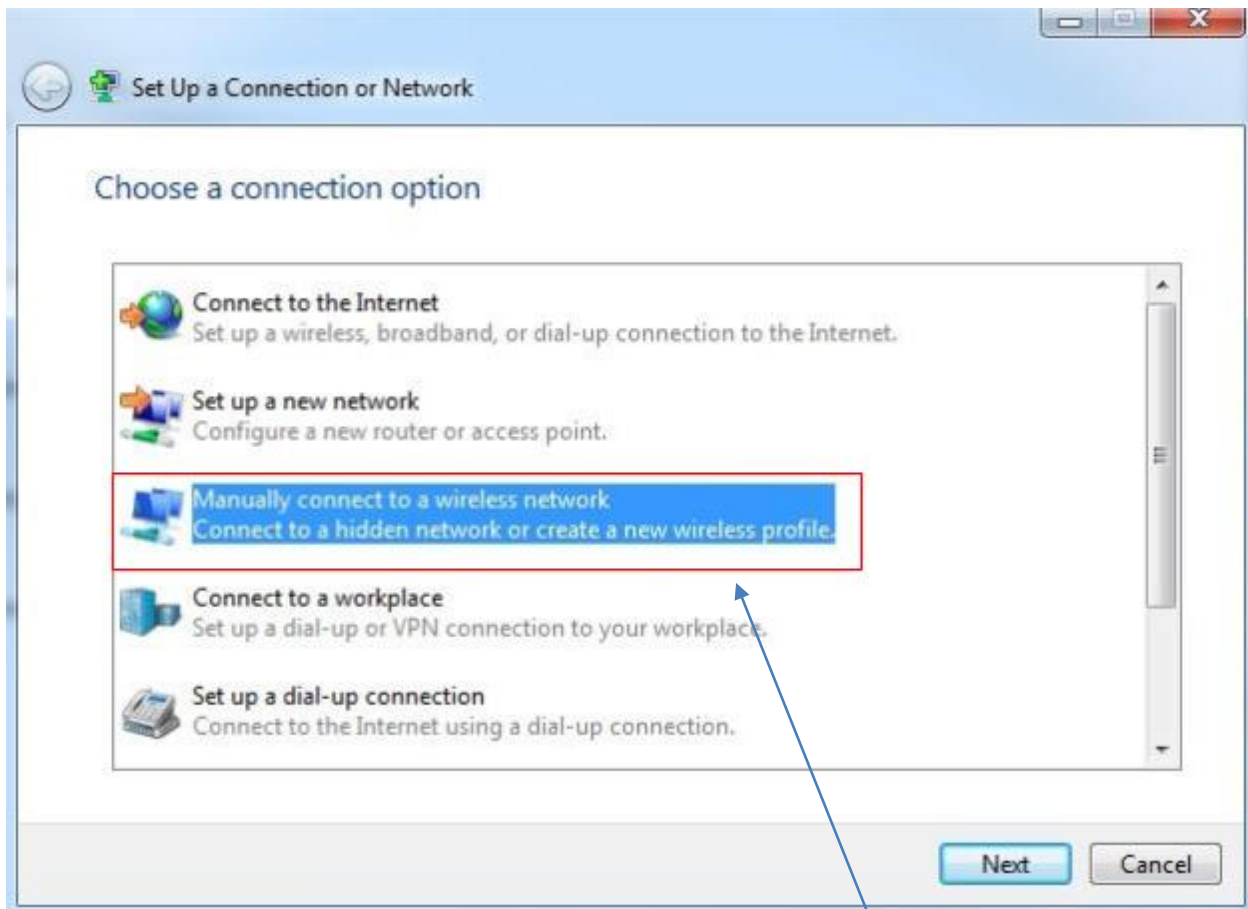
- 1.) Click on the wireless icon in the lower right hand corner of the screen, to the left of the date and time. This will open up the wireless network connection screen.
- 2.) Click on “LCCC-Student” and make sure the “Connect automatically” box is checked. Then Click on “Open Network and Sharing Center”.



3.) On the window that opens, click on “Set up a new connection or network”



4.) On the window that opens, select “Manually connect to a wireless network”



5.) On the window that opens enter “LCCC-Student” in the Network name field, and select “WPA2-Enterprise” for the security type. Make sure that “AES” is selected as the “Encryption type”, and leave the “Security Key” field blank. Finally, make sure the “Start this connection automatically” box is checked, and the “Connect even if the network is not broadcasting” box is unchecked. Then click “Next”.

Manually connect to a wireless network

Enter information for the wireless network you want to add

Network name:

Security type:

Encryption type:

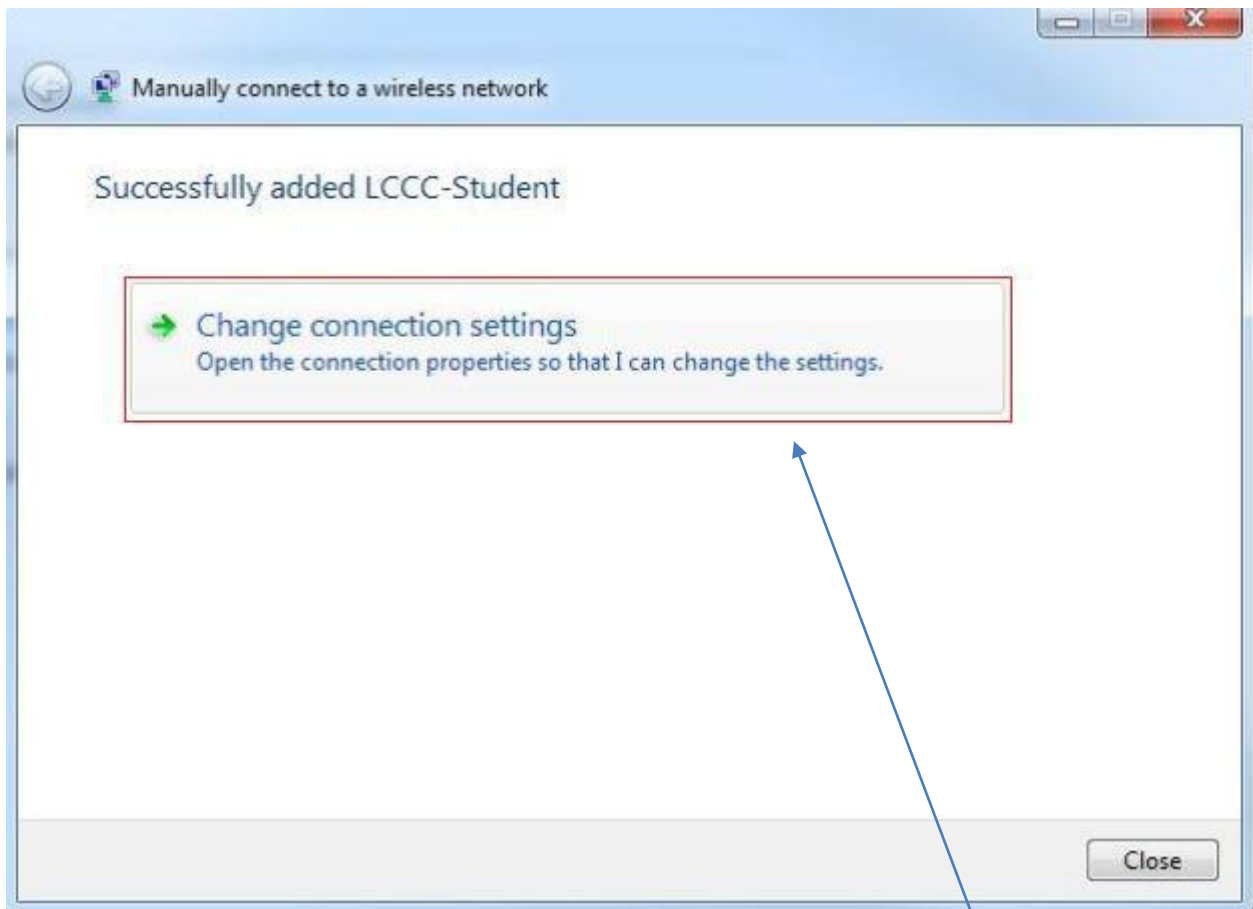
Security Key:   Hide characters

Start this connection automatically

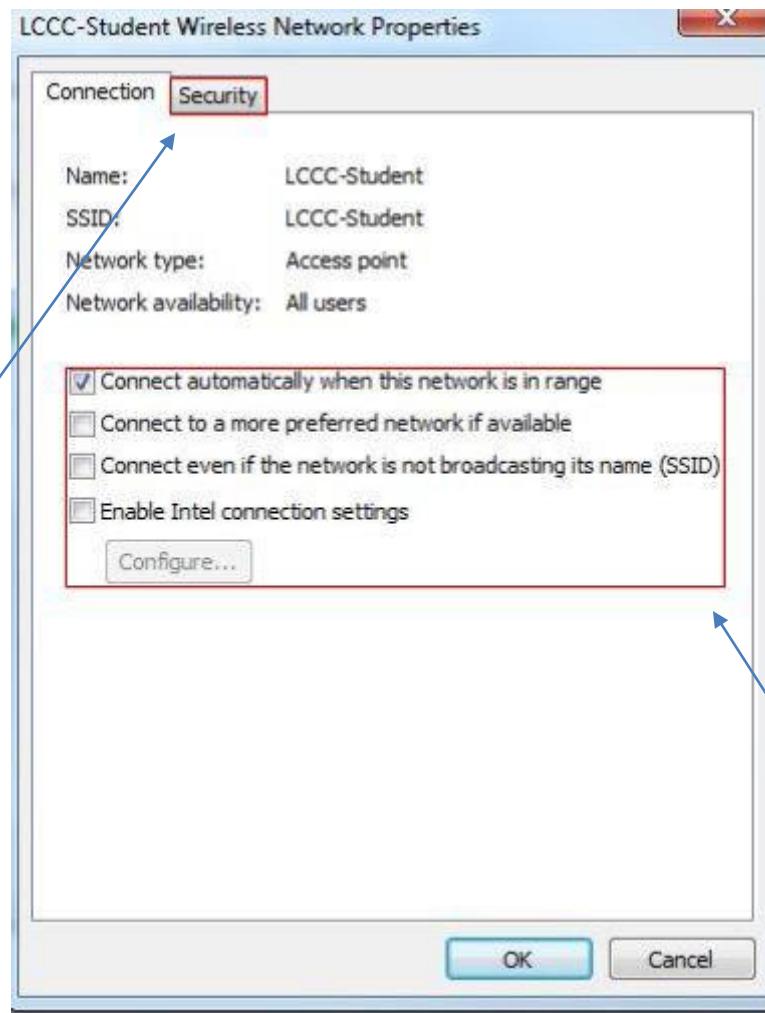
Connect even if the network is not broadcasting  
Warning: If you select this option, your computer's privacy might be at risk.

Next Cancel

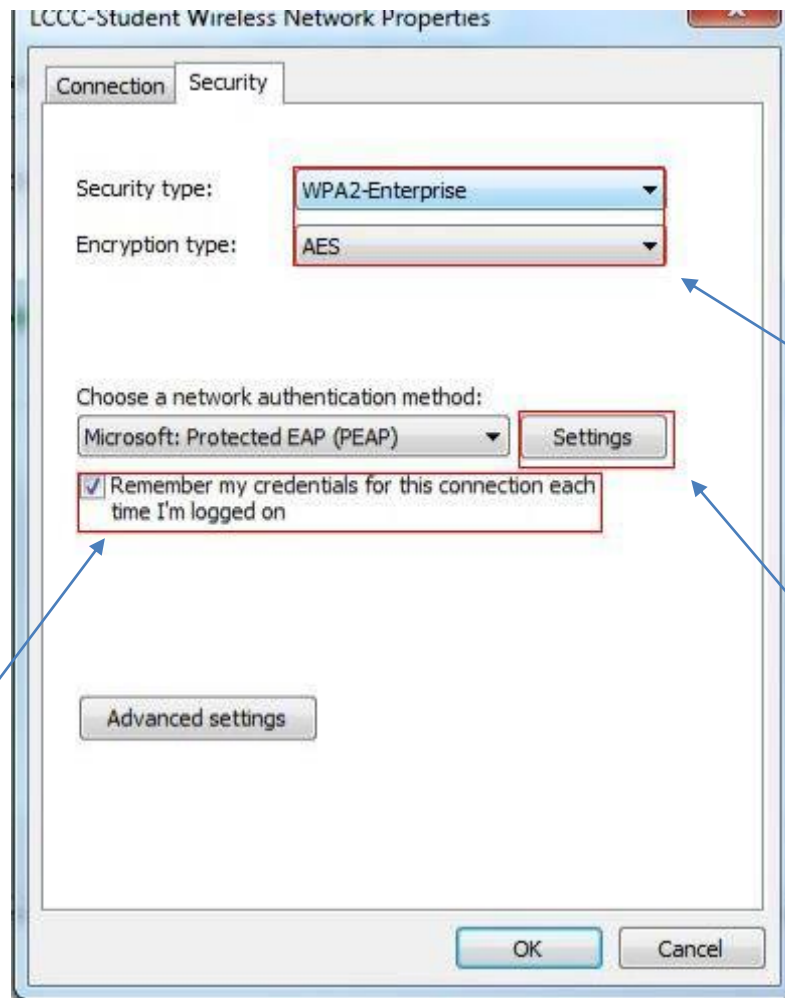
6.) On the window that opens, select “Change connection settings”



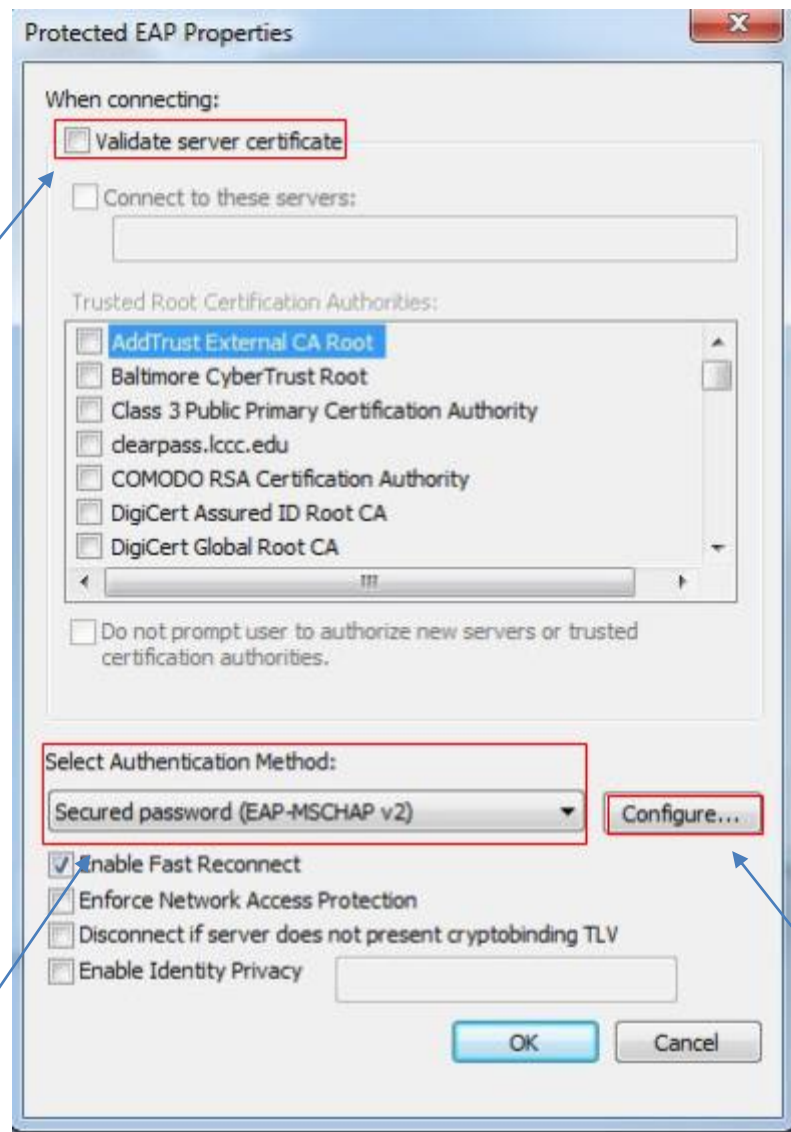
7.) On the window that opens, make sure the “Connect automatically when this network is in range” box is checked, and that all the other boxes are unchecked. Finally, click the “Security” tab.



8. )Change the “Security Type” to “WPA2-Enterprise”, and make sure the “Encryption type” is “AES”. Make sure the network authentication method is “Microsoft: Protected EAP (PEAP)”, and that the “Remember my credentials for this connection each time I’m logged on” box is checked. Finally, click the “Settings” button.

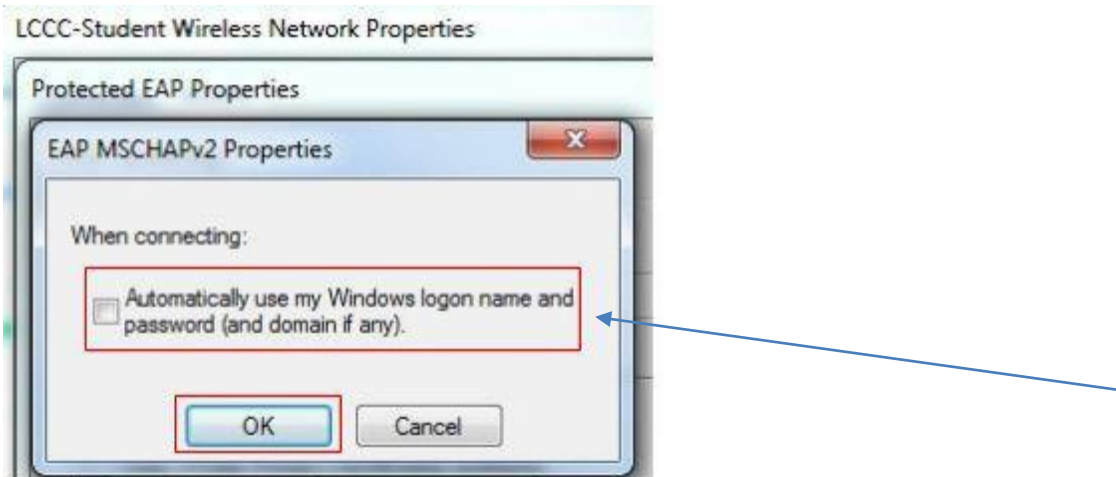


9.) On the window that opens, uncheck the “Validate server certificate” box. Make sure the “Secured password (EAP-MSCHAP v2)” is selected for “Select Authentication Method” You can leave the remaining boxes underneath that as is. Finally, click the “Configure” button.

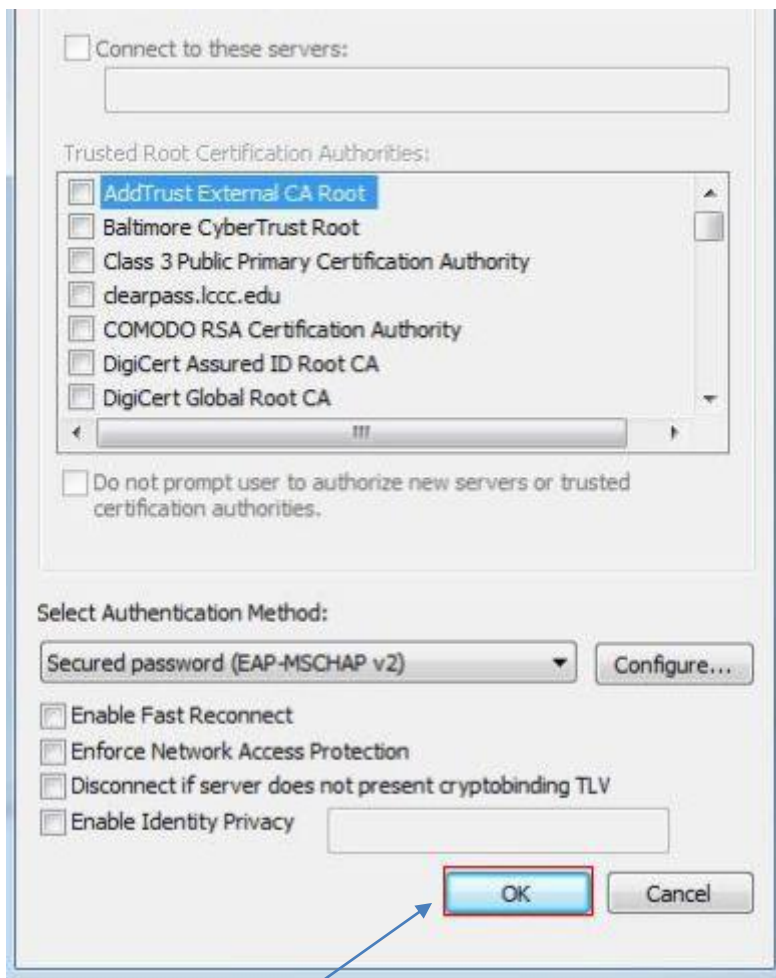




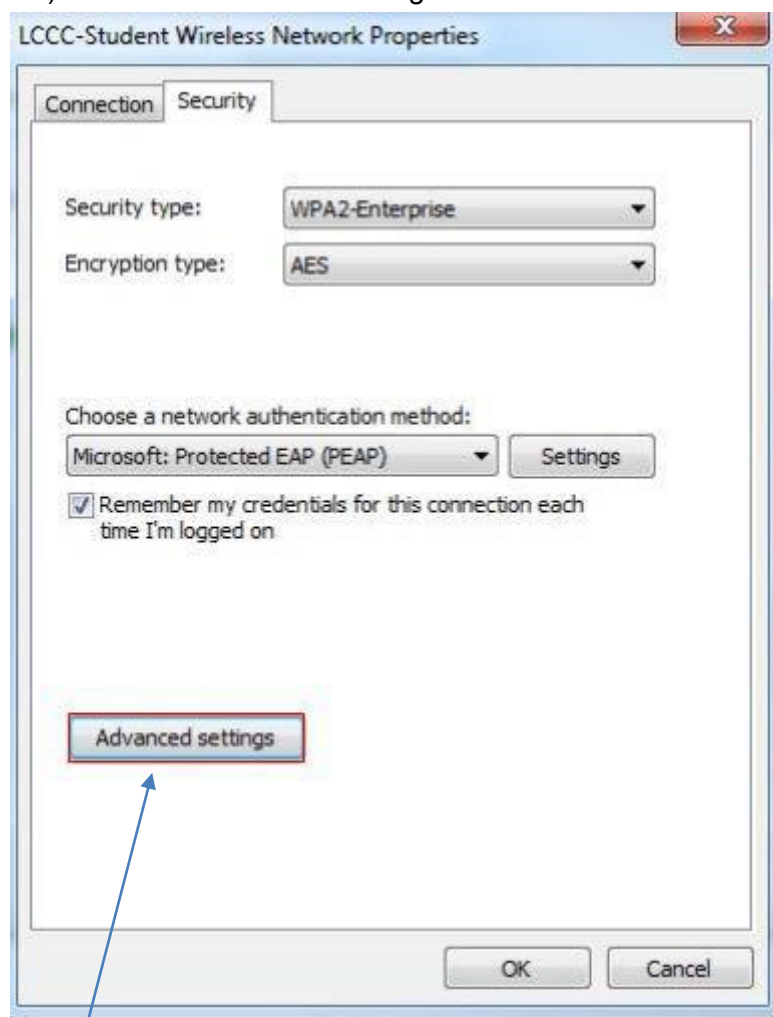
10.) On the window that opens, uncheck the “Automatically use my Windows logon name and password (and domain if any)” box, then click “OK”.



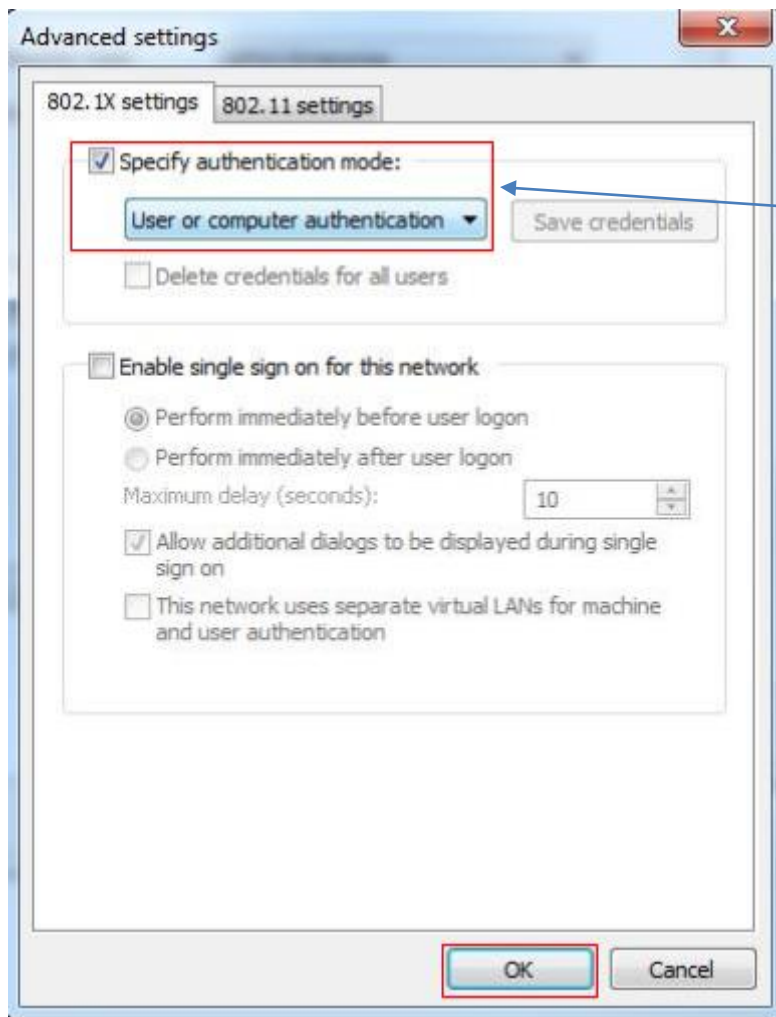
11.) Click “OK” on the window.



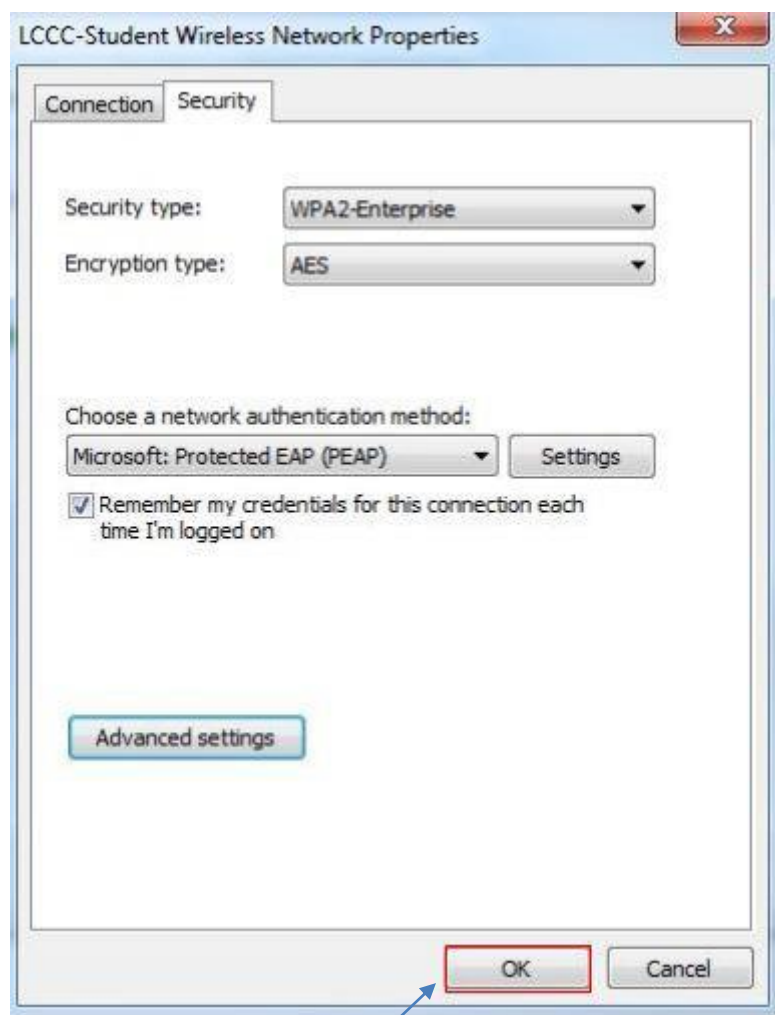
12.) Click the “Advanced Settings” button.



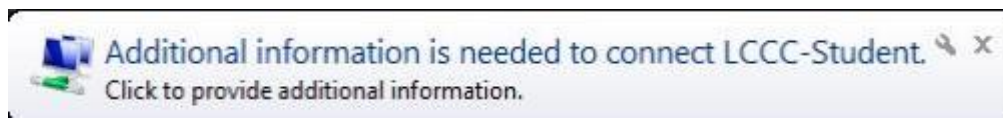
13.) On the window that opens, check the “Specify authentication mode” box, and select “User or computer authentication” in the drop down menu. Finally, click “OK”.



14.) Click “OK” on this window as well, then close any remaining windows (if any).



15.) Click on the “Additional information is needed to connect LCCC-Student” prompt in the lower right hand corner.



16.) On the window that opens, type in your MyLCCC login for your username, and your MyLCCC password in the password field. Finally, click “OK”.



17.) You are now connected to the college Wi-Fi. If you are properly connected, the Wi-Fi icon will look like it does in the image below.

