

campus map & guide

MAIN CAMPUS • SCHNECKSVILLE

Welcome to Lehigh Carbon Community College, a comprehensive two-year public college situated on approximately 250 acres of rolling hills and orchards in Schnecksville. The college was established in 1966 and is sponsored by thirteen school districts in Lehigh and Carbon counties.

Both credit and noncredit educational opportunities are available at the Schnecksville campus, Airport Site, Donley Center in Allentown, Carbon Center in Nesquehoning, Morgan Center in Tamaqua, and several other community locations. Over 120 credit A.A.S. degrees and certificates prepare students for immediate

employment, and are available in technology, business, allied health, and public service areas. LCCC offers many programs designed for transfer to a four-year college or university. College transfer can save students thousands of dollars.

Noncredit classes are offered to citizens of all ages who wish to improve their professional skills,

expand their knowledge, and/or enrich their cultural lives. The college offers hundreds of classes annually in vocational areas, public safety, professional development, literacy and job training, and leisure-time activities.

Through the Leadership & Workforce Development Center, LCCC offers credit and noncredit programs to area businesses and organizations on a contract basis. These programs are customized to meet the organization's needs for content, location, and scheduling.



4525 Education Park Drive, Schnecksville, PA 18078-2598 • 610-799-2121 • www.lccc.edu

START HERE | GO ANYWHERE

Directions to main campus in Schnecksville

From Northeast Extension of Pa. Turnpike

Take Lehigh Valley Exit 56 to Route 22 East. After traveling less than 1 mile east on Route 22, take Exit 53 onto Route 309 North (Tamaqua) exit. Look for a sign indicating Lehigh Carbon Community College. (If you get to the Cedar Crest Boulevard exit, you have passed Route 309 exit.) Continue north on Route 309 for 6 miles. After passing the Schnecksville Fire Company, turn left at the second blinking yellow light at the "Education Park" sign to Lehigh Carbon Community College. (If you get to the intersection of Routes 873 and 309, you have passed the college.) The buildings on your left are the Lehigh Career and Technical Institute. LCCC will be on your right. The flagpole after the Korea Vietnam Memorial marks the entrance to the Administration Building. Park in any student/visitor lot.

From Route 22/I78

From Easton, Bethlehem, and Allentown

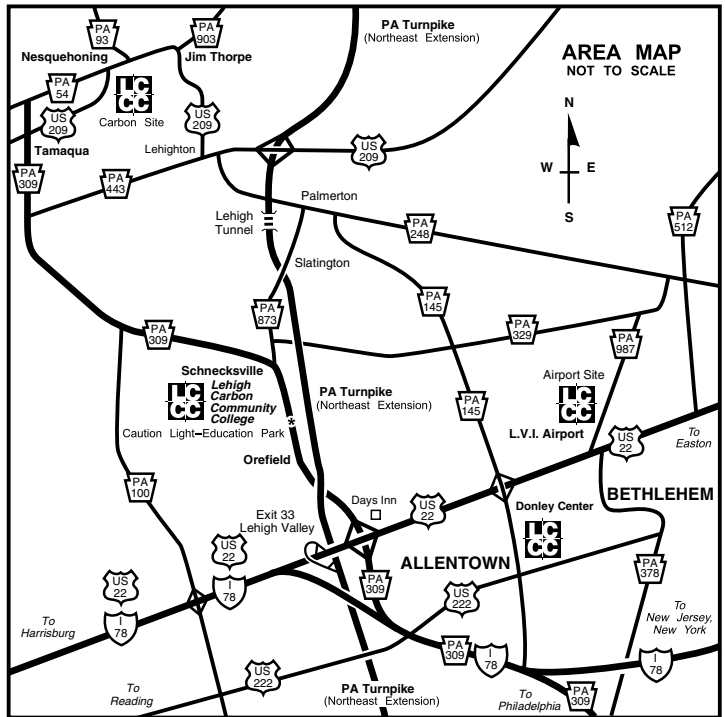
Travel west on Route 22, take Exit 53 onto Route 309 North. Look for a sign indicating Lehigh Carbon Community College. (If you get to the Northeast Extension of the Pennsylvania Turnpike, you have passed Route 309 exit.) Continue north on Route 309 for 6 miles. After passing the Schnecksville Fire Company, turn left at the second blinking yellow light at the "Education Park" sign to Lehigh Carbon Community College. (If you get to the intersection of Routes 873 and 309, you have passed the college.) The buildings on your left are the Lehigh Career and Technical Institute. LCCC will be on your right. The flagpole after the Korea Vietnam Memorial marks the entrance to the Administration Building. Park in any student/visitor lot.

From west

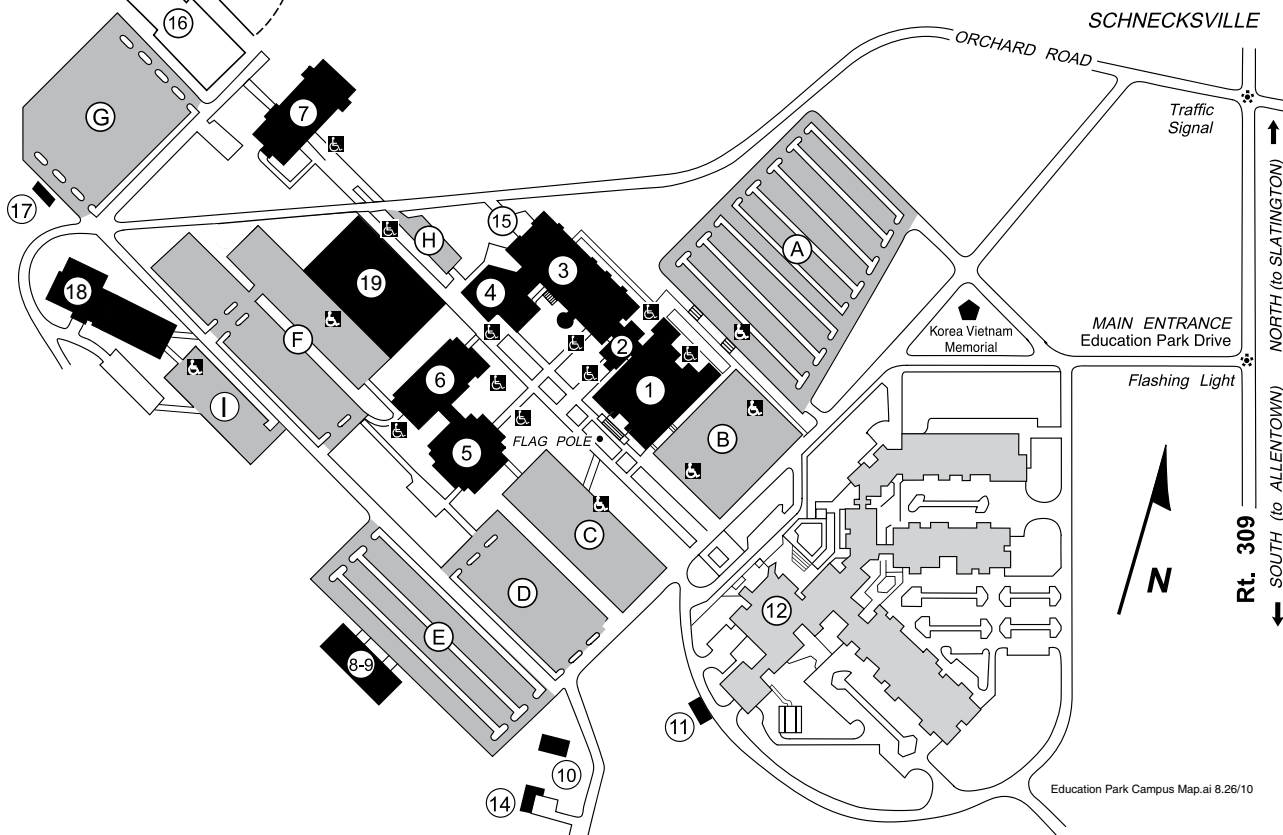
Travel east on Route 22, take Exit 51 onto Route 309 North. Look for a sign indicating Lehigh Carbon Community College. (If you get to the Cedar Crest Boulevard exit, you have passed Route 309 exit.) Continue north on Route 309 for 6 miles. After passing the Schnecksville Fire Company, turn left at the second blinking yellow light at the "Education Park" sign to Lehigh Carbon Community College. (If you get to the intersection of Routes 873 and 309, you have passed the college.) The buildings on your left are the Lehigh Career and Technical Institute. LCCC is on your right. The flagpole after the Korea Vietnam Memorial marks the entrance to the Administration Building. Park in any student/visitor lot.

From north

Travel east on Route 248 to Route 145. Continue south on Route 145 to Route 873 through Slatington. Where Route 873 meets Route 309 in Schnecksville, continue south on Route 309. At blinking light, turn right onto Education Park Drive. Follow the directions posted on the signs to the LCCC Schnecksville Campus.



Education Park Campus Map



Education Park includes
Lehigh Carbon Community College and
Lehigh Career and Technical Institute

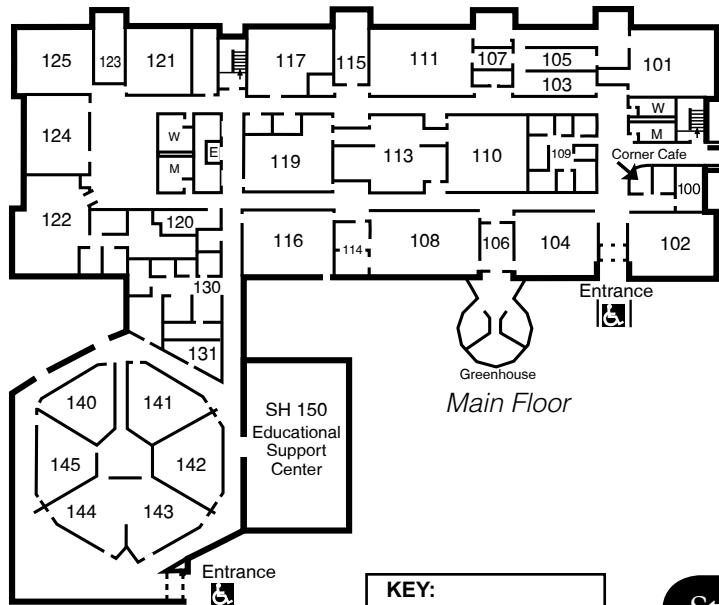
- KEY:**
- 1. Administration Building (AD)
 - 2. Student Union
 - 3. Science Hall (SH)
 - 4. Fowler Education Center
 - 5. Academic Resource Center (ARC)
 - 6. Technology Center (TC)
 - 7. Berrier Hall (BH)
 - 8-9. Construction/HVAC
 - 10. WXLV Radio Station
 - 11. Vet Tech (Barn)
 - 12. Lehigh Career and Technical Institute
 - 13. Sewage Plant
 - 14. Maintenance Building
 - 15. Receiving Dock
 - 16. Tennis Courts
 - 17. Modular CDL
 - 18. Rothrock Library / Alumni Center
 - 19. Community Services Center
- PARKING LOTS**
 Student & Visitor - A, C, D, E, F, I
 Staff - B, F, I
 Handicap - H
 CDL - G
- Handicap parking is available in all lots.
- Handicap Accessible Entrances

Building/Room Guide

Science Hall (SH)

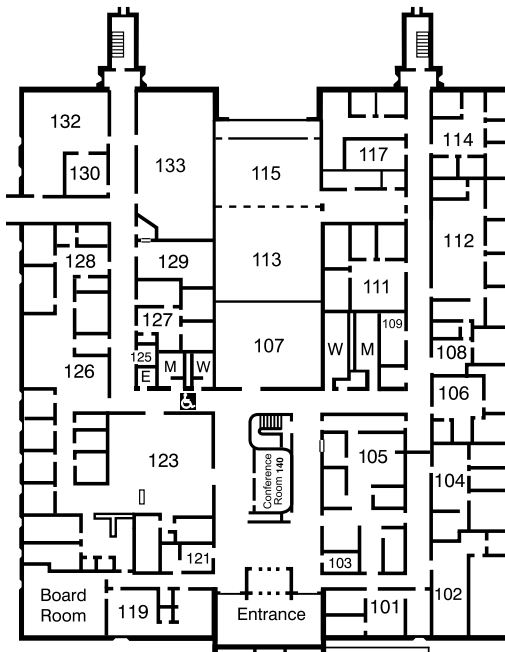
Administration Building (AD)

Fowler Education Center



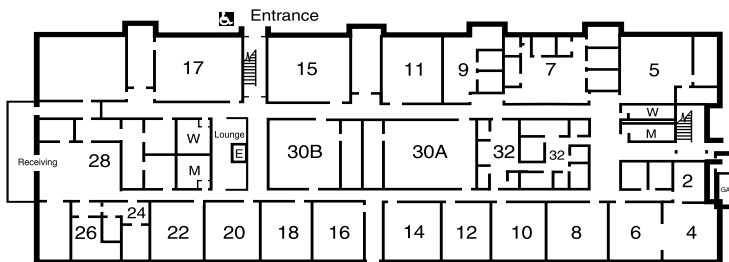
Main Floor

- KEY:**
- E** Elevator
 - M** Men's restroom
 - W** Women's restroom
 - Handicap Entrance

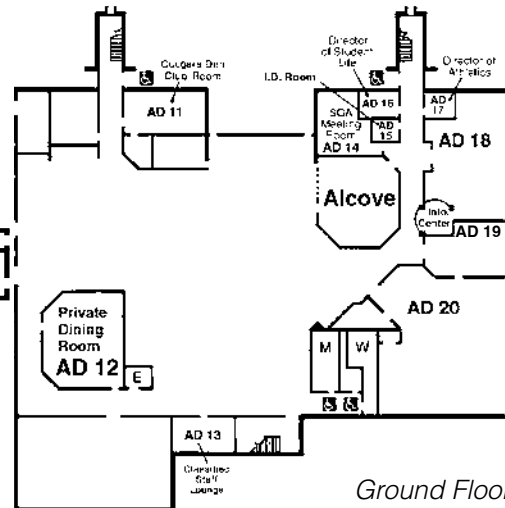


Main Floor

Student Union

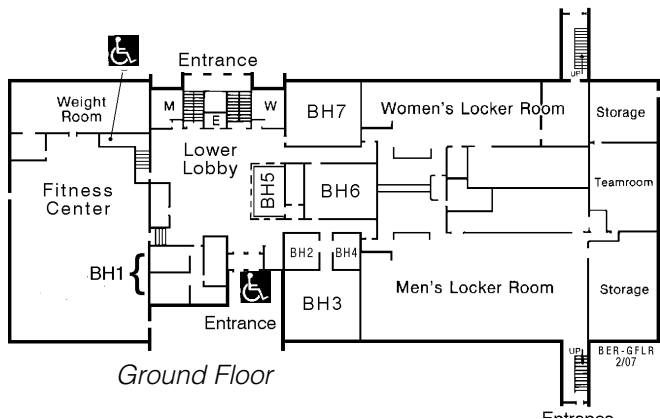


Ground Floor

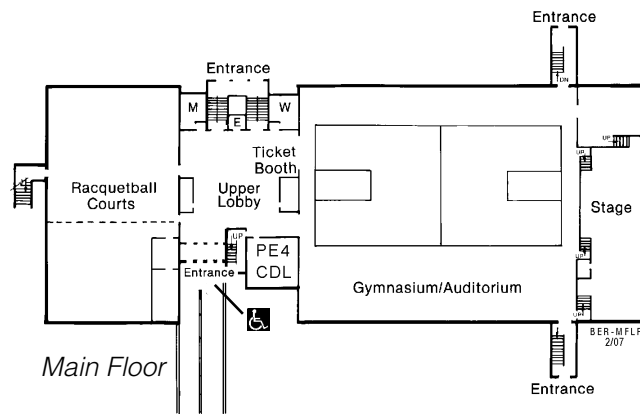


Ground Floor

Berrier Hall (BH)

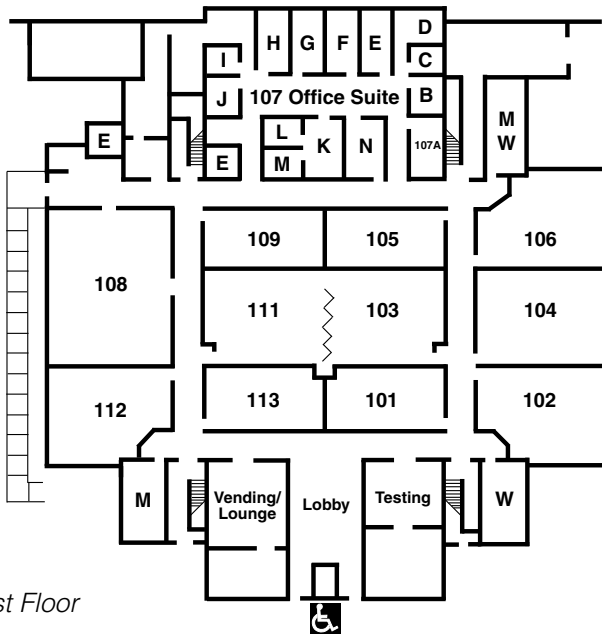


Ground Floor

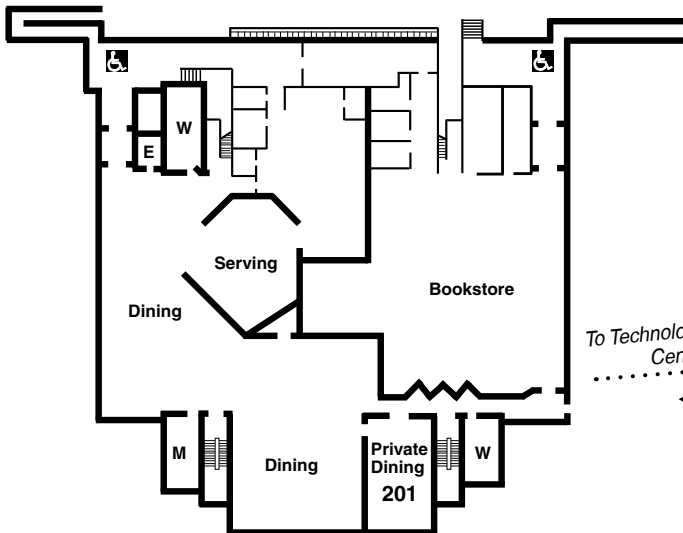


Main Floor

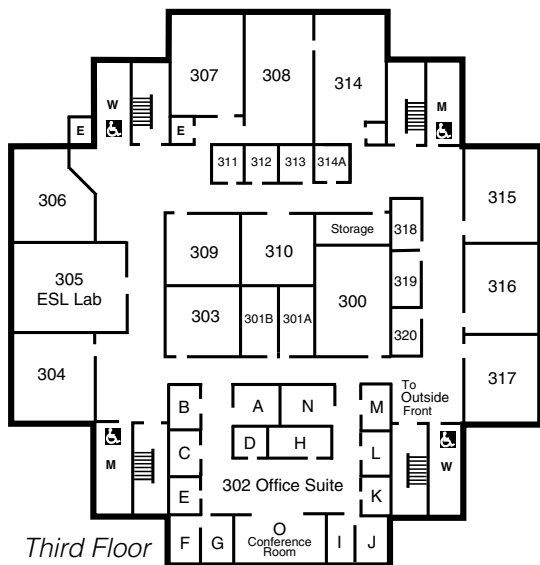
Academic Resource Center (ARC)



First Floor

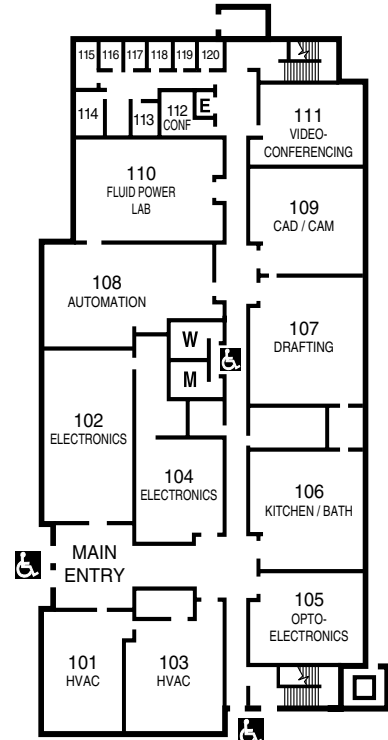


Second Floor

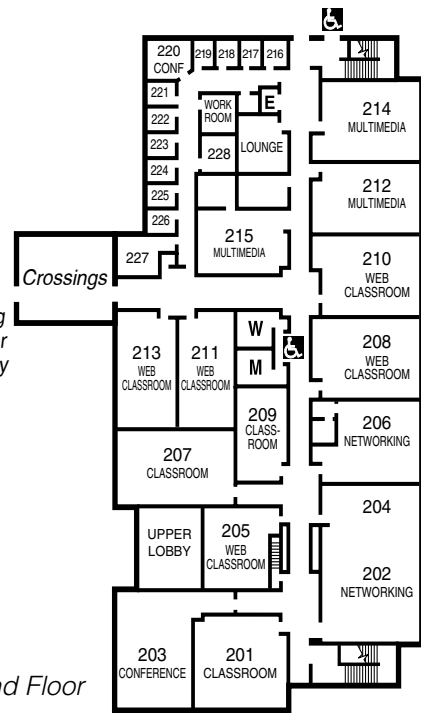


Third Floor

Technology Center (TC)



First Floor



Second Floor



Lehigh Carbon
COMMUNITY COLLEGE

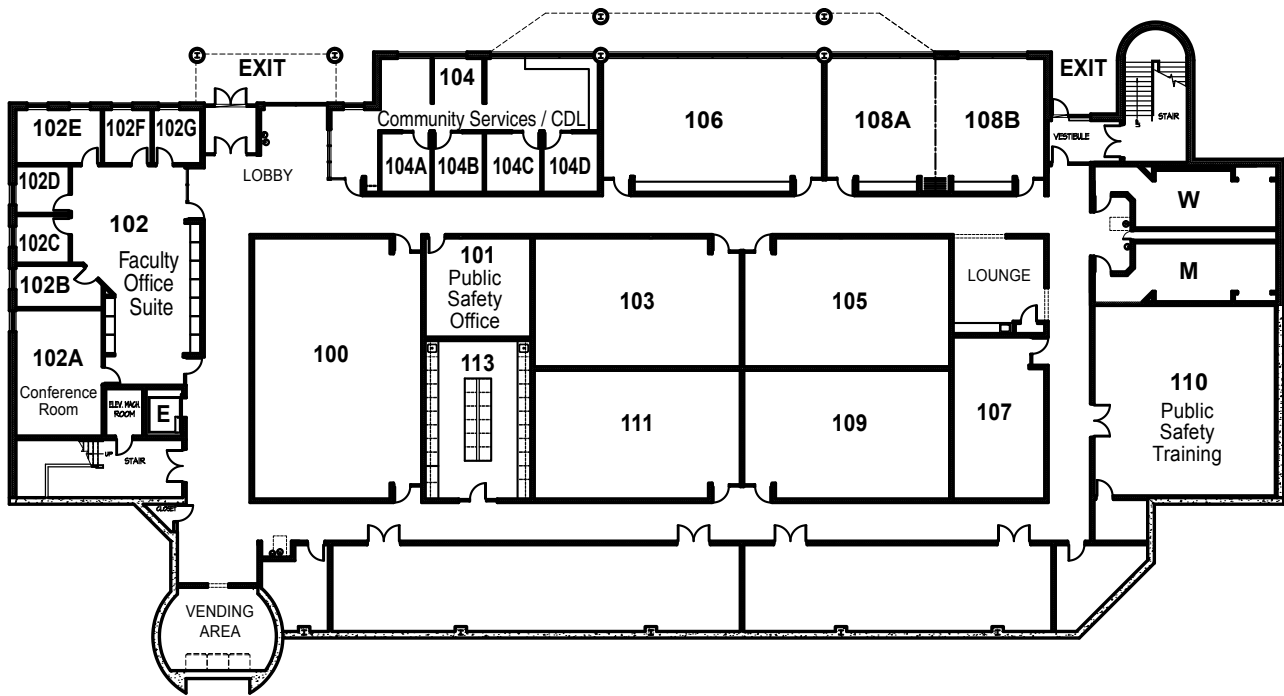
4525 Education Park Drive
Schnecksville, PA 18078-2598
610-799-2121

Start here
go anywhere.

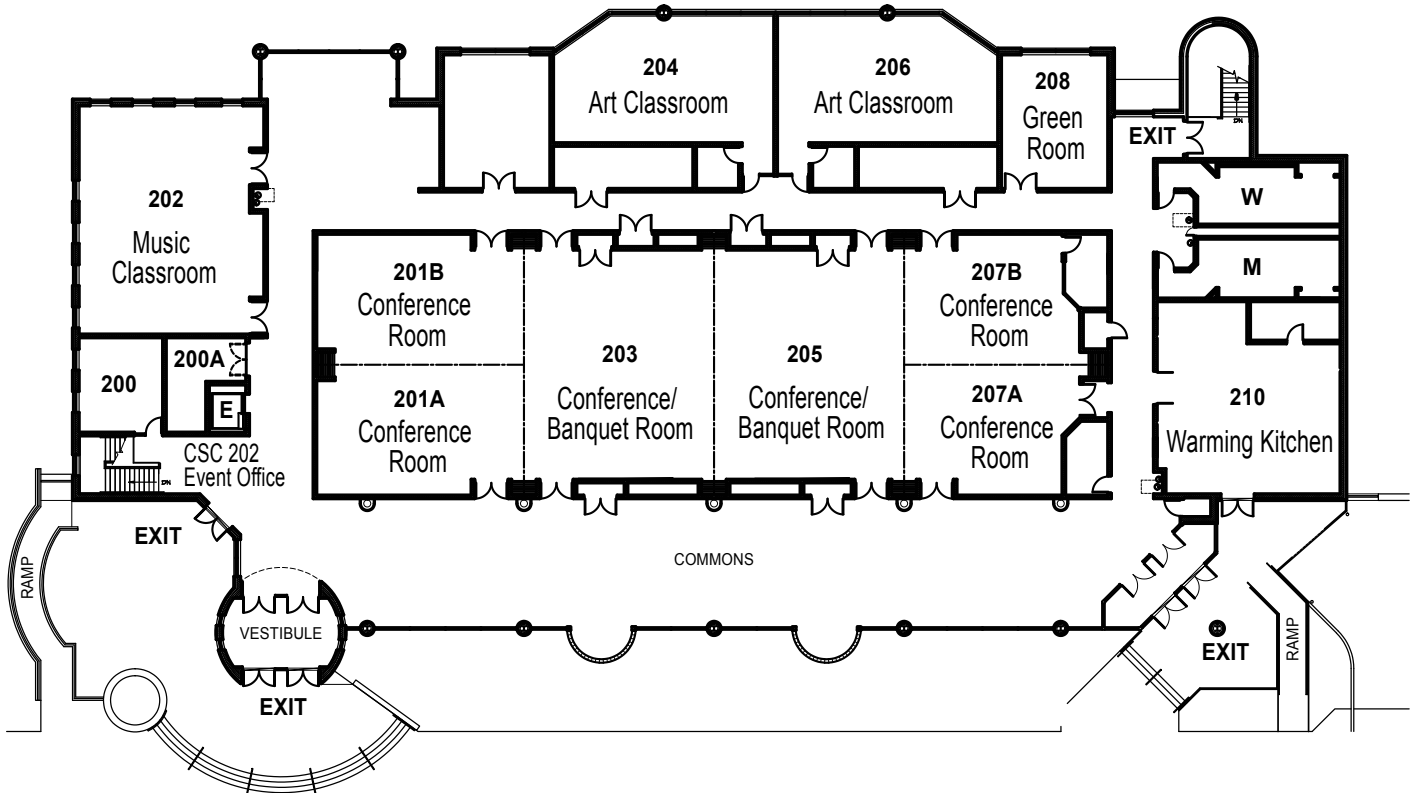
The College will not discriminate on the basis of race, color, sex, religion, ancestry, national origin, age, disabilities, veteran status, or sexual orientation in its educational programs, activities, admissions, or employment practices as required by applicable laws and regulations. For information regarding civil rights or grievance procedures or for information regarding services, activities, and facilities that are accessible to and useable by persons with disabilities, contact the Office of Human Resources. Students may contact the Office of Disability Support Services, LCCC, 4525 Education Park Drive, Schnecksville, PA 18078-2598, 610-799-2121. campus-map-new.ind (1/17/10)

Visit our Website at www.lccc.edu

Community Services Center

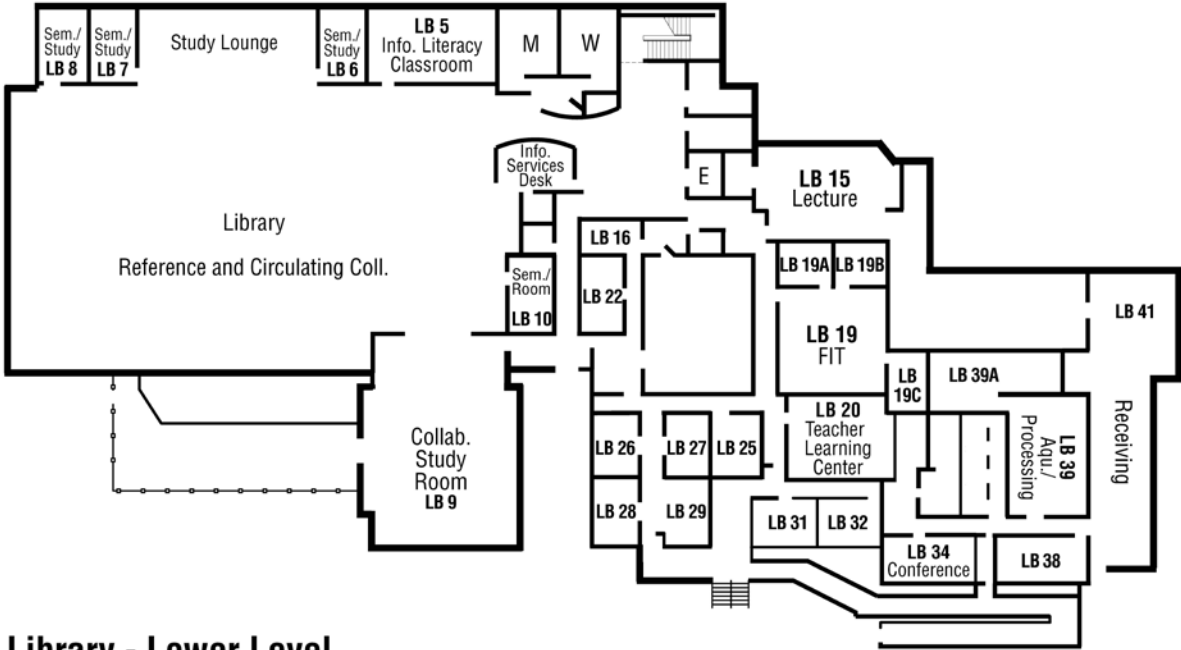


Ground Floor

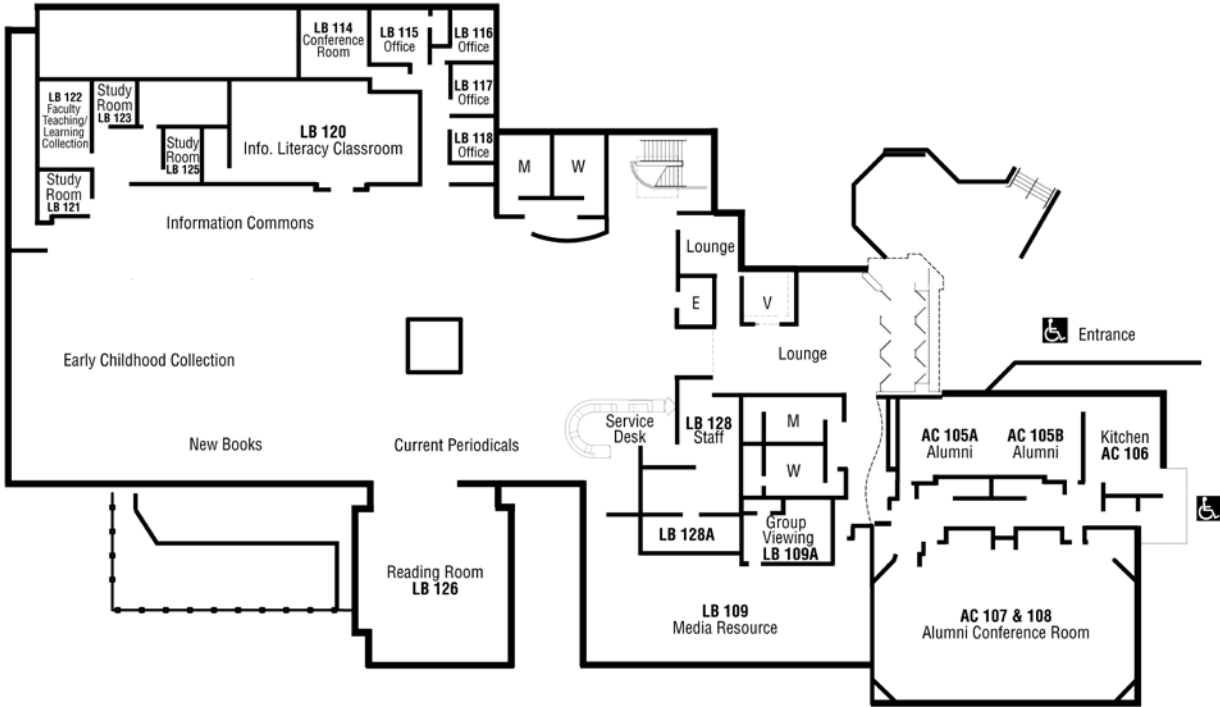


Main Floor

Rothrock Library



Library - Lower Level



Library - Upper Level